

# 2022 ESG



[www.xgd.com](http://www.xgd.com)

0755 83481391

01 •

1

02 •

03 •

07 •

10 •

12 •

2

13 •

14 •

15 •

3

15 •

16 •

4

17 •

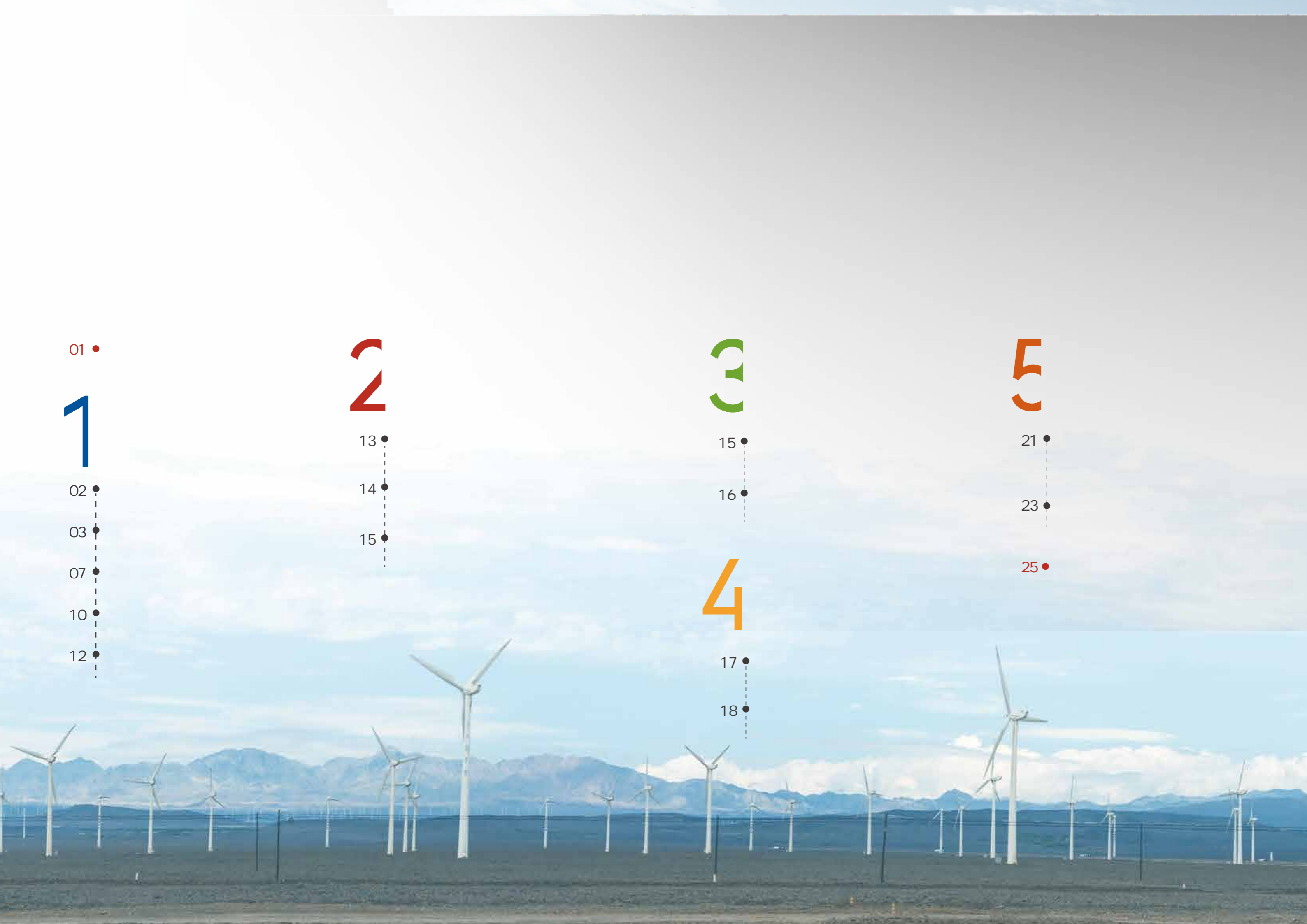
18 •

5

21 •

23 •

25 •



Speech by the Chairman

2022

"

"

"

"

"

"

Summar



2022 1 1 12 31

2022

GRI Standards

CASS CSR4.0

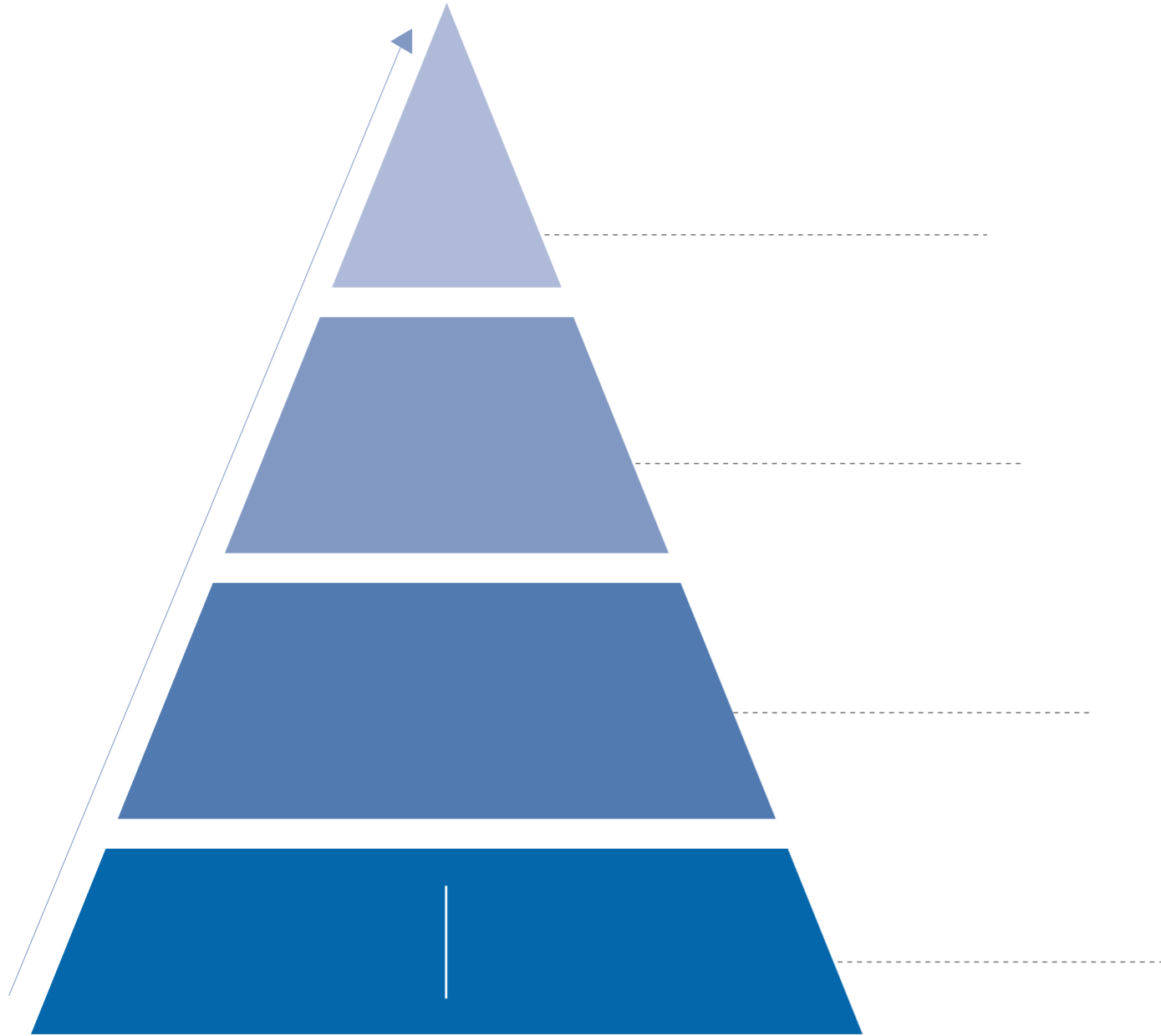


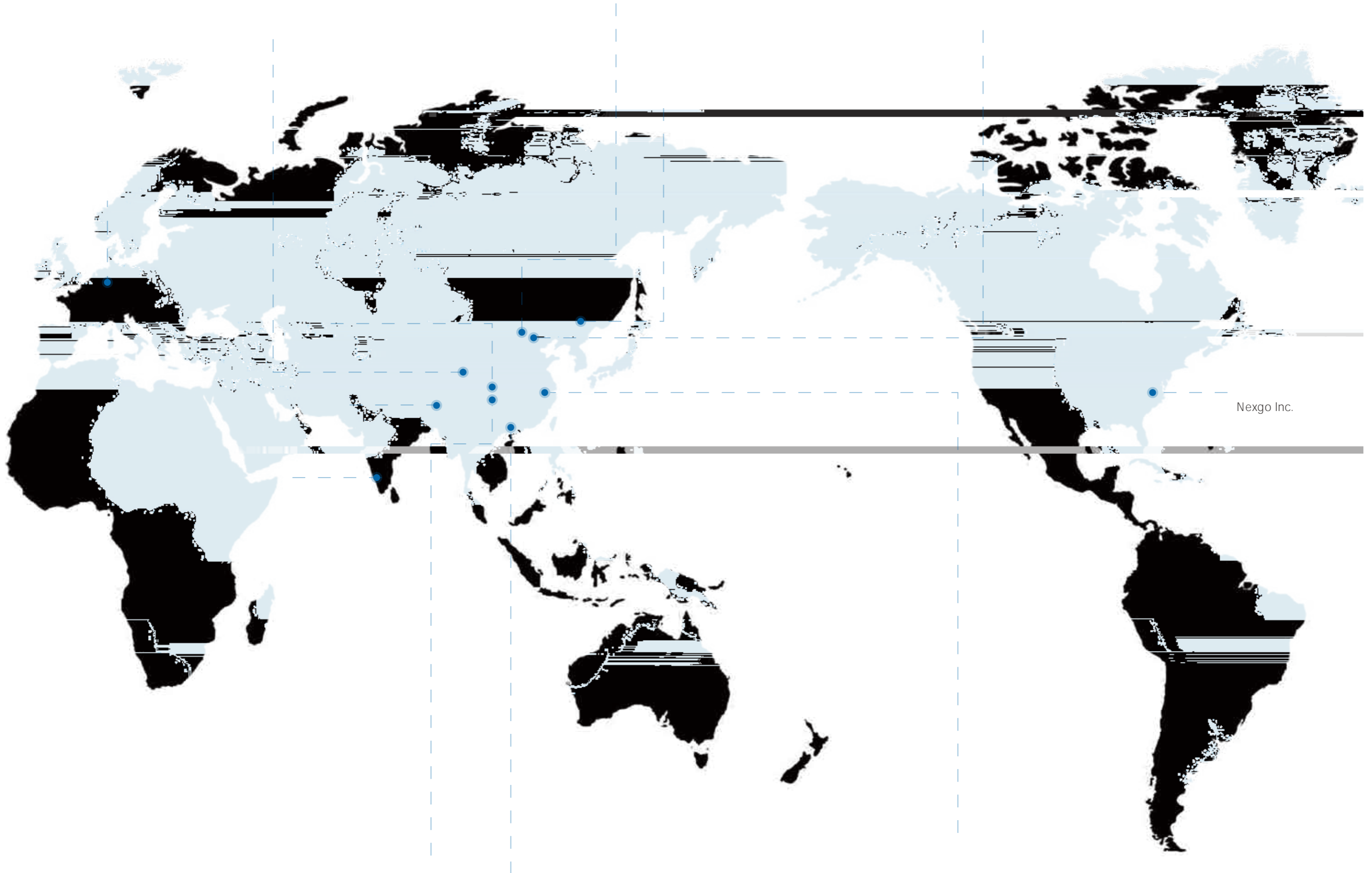
<http://www.szse.cn>

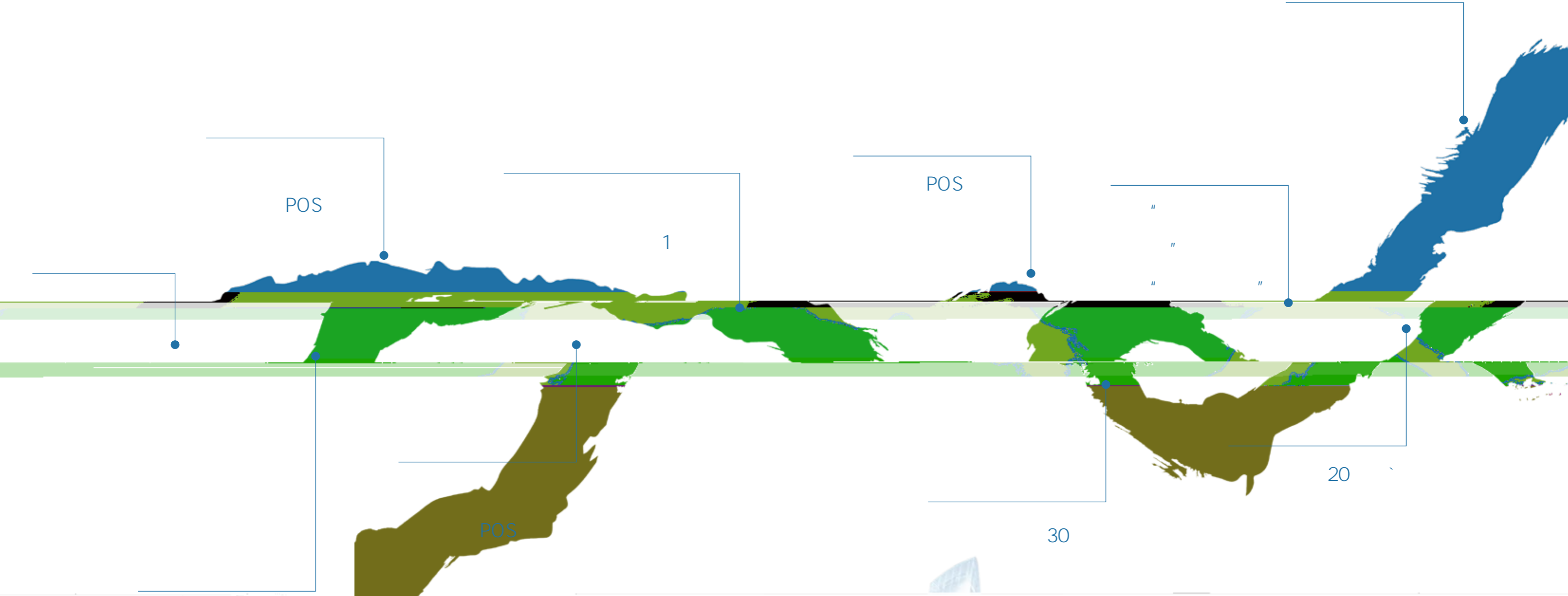
<http://www.cninfo.com.cn>

[www.xgd.com](http://www.xgd.com)









ISO 9001 2000



# 2022

1 13

3 18

" "

5 Visa

2021 "

" "

"

" "

"

"

3

5 24

9 19

2 e

1

/

0

"

"

"

"



“ + ”

SaaS

POS

2022

SaaS

SaaS

POS

POS

POS

POS

POS

POS

MPOS



III    MR980   MF80

“

”

2022

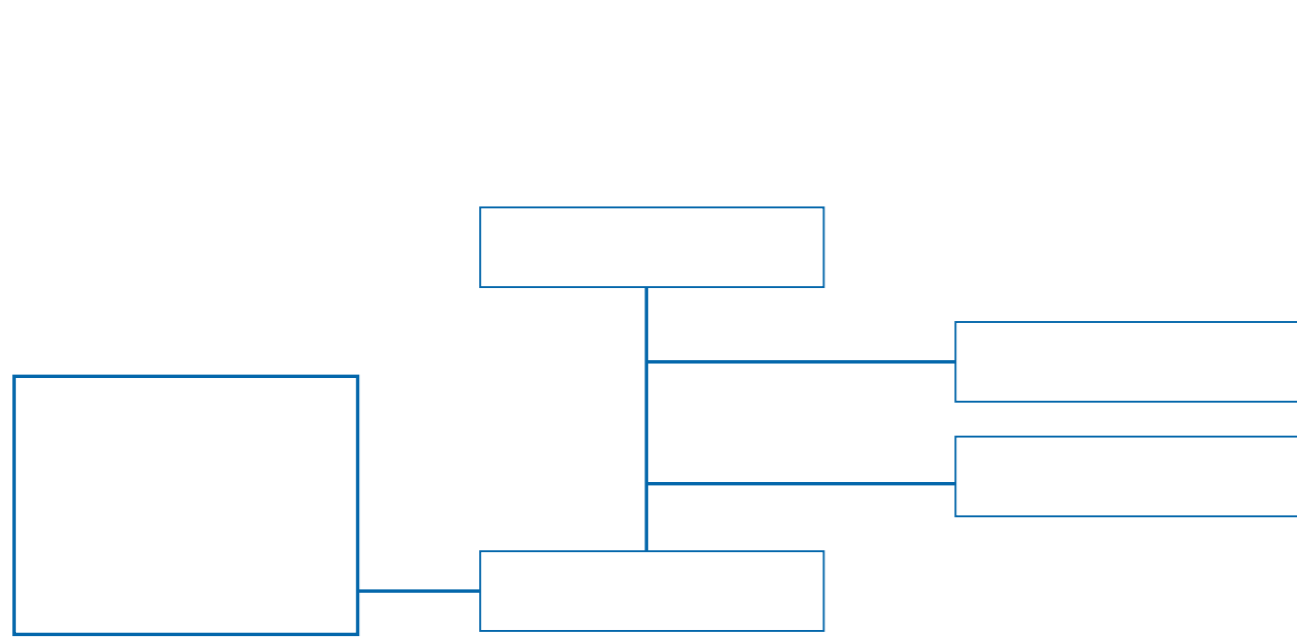
“ ”

2022 9



Robust corporate governance





2022 7

4 3

3 1

2022 6

2022

1



8

3

127

4

123

“ ”

2022

136

2022

2021

A

A



2022

2022

473



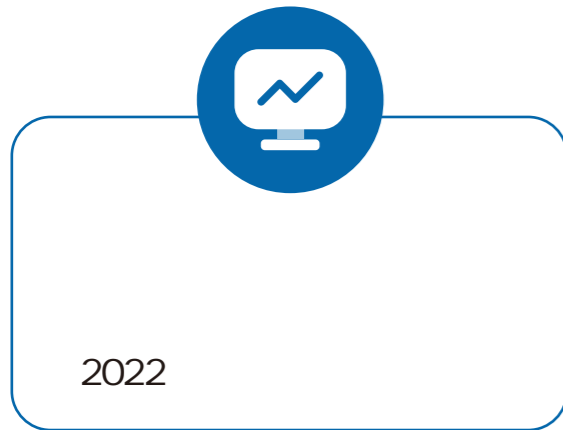
“ ”

2022

Green production development

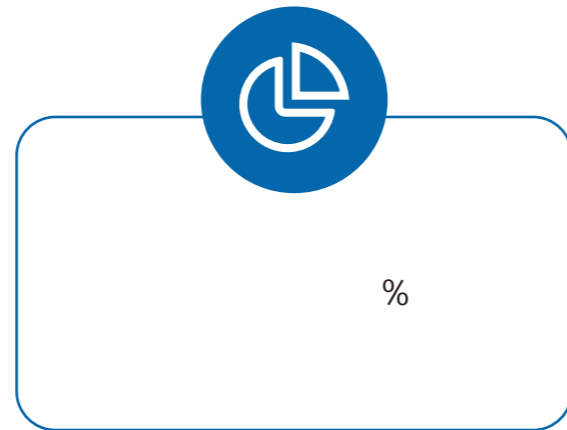


" " SaaS " 2021  
 " "  
 2022 9 19 "

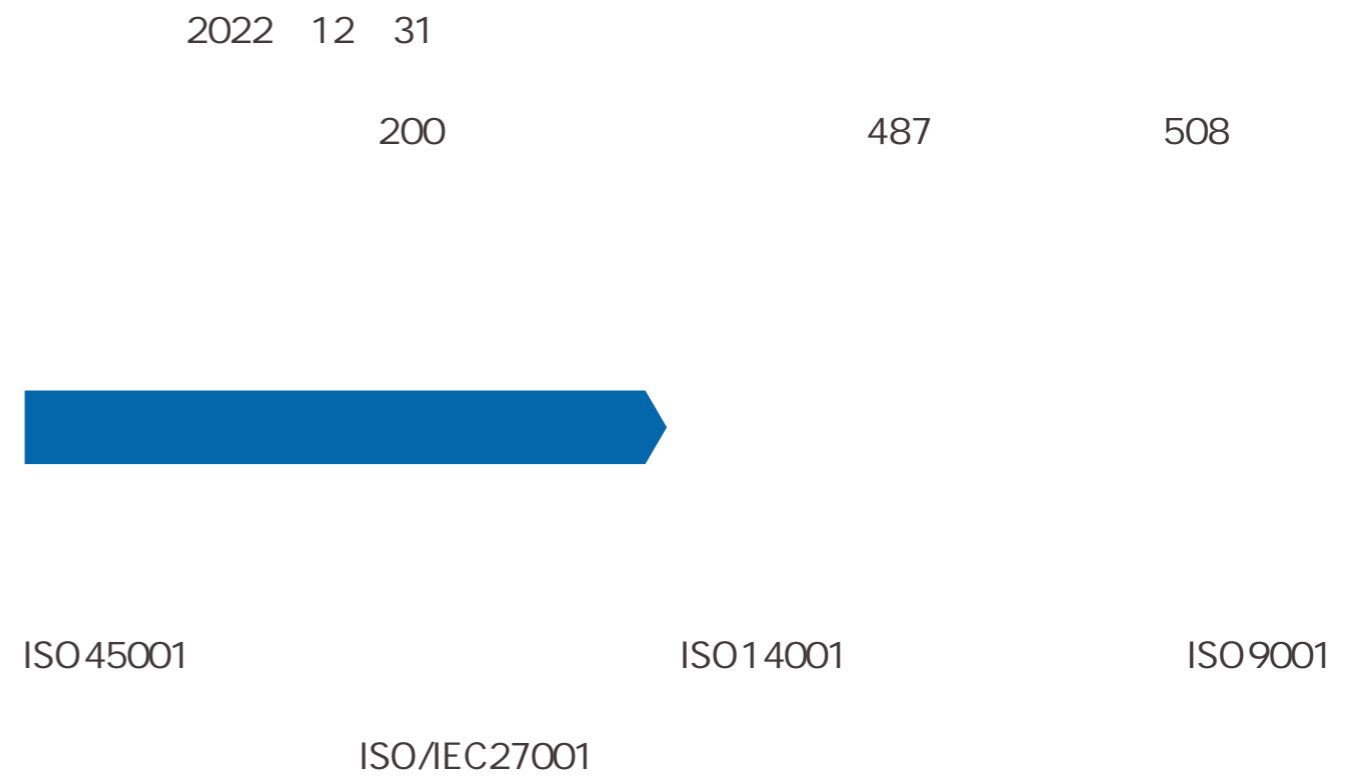


2022 12 31

2022



671



ISO45001

ISO/IEC27001

ISO14001

ISO9001

ISO14001



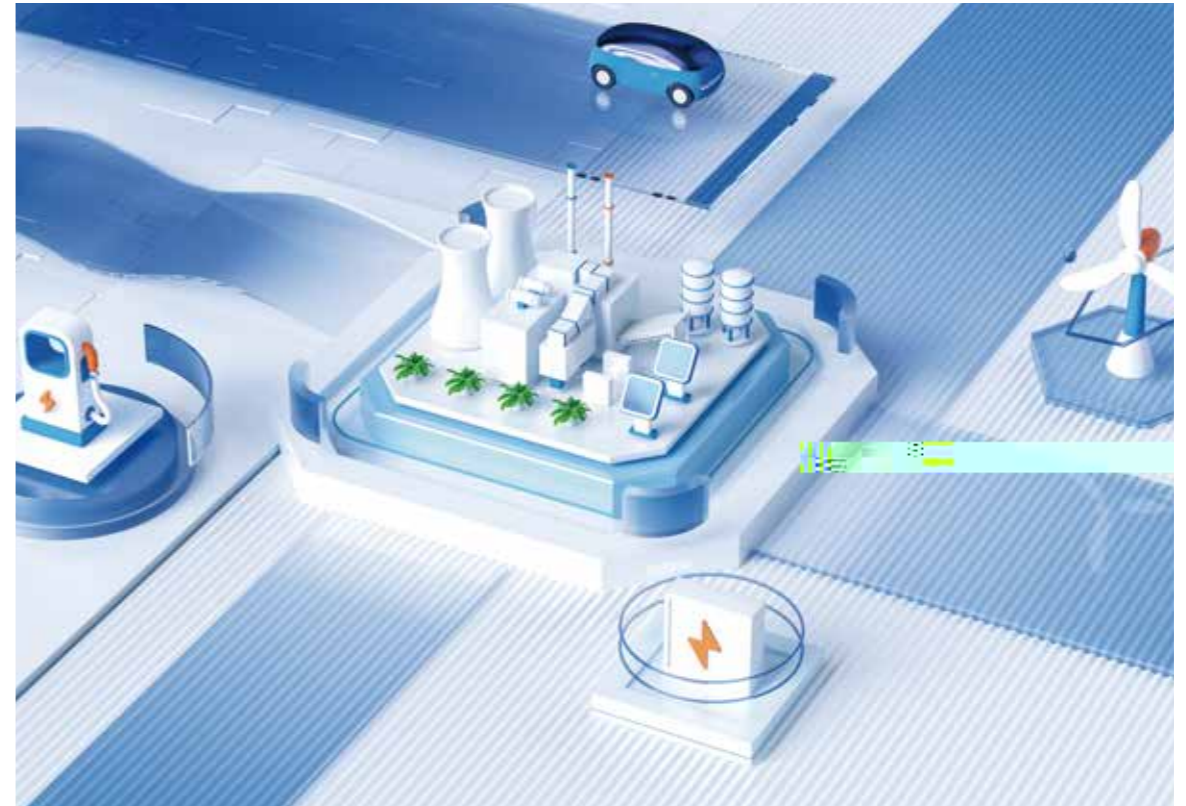
ROHS



POS

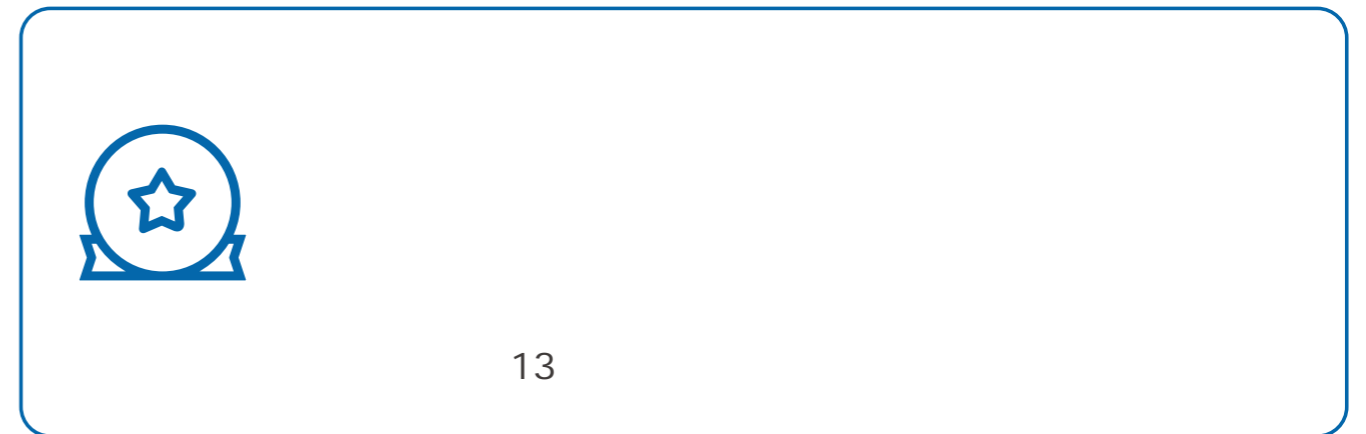
POS

SaaS





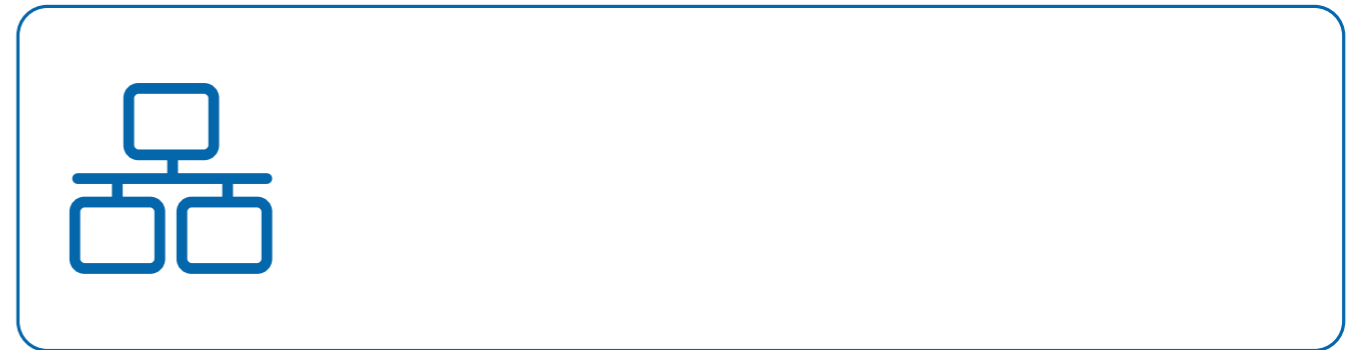
Rights protection





“ ”

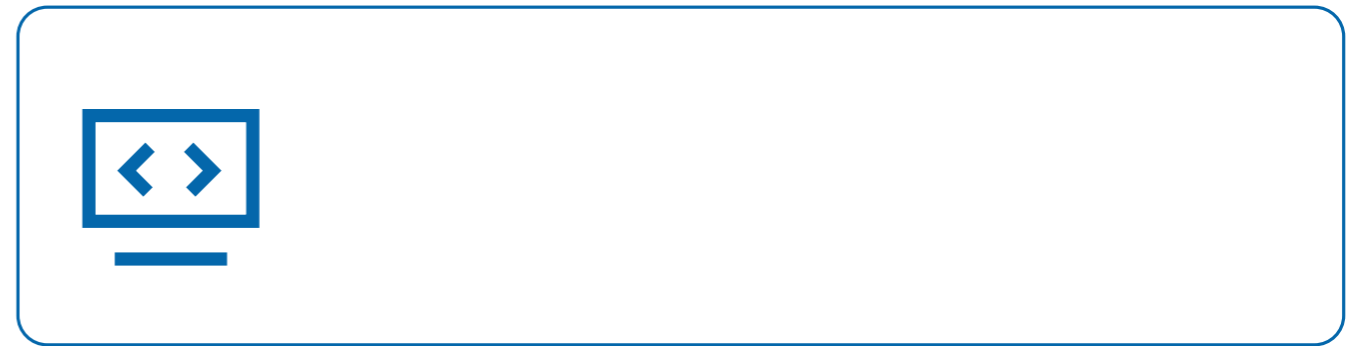
2019 316



7\*24

APP

2021 10



APP POS



”

OHSAS18001





2022 12

31 5,447.60

197

2022 12 31

314 54.18

2,403

27.77

Social welfare





2022 7 25

“ ”

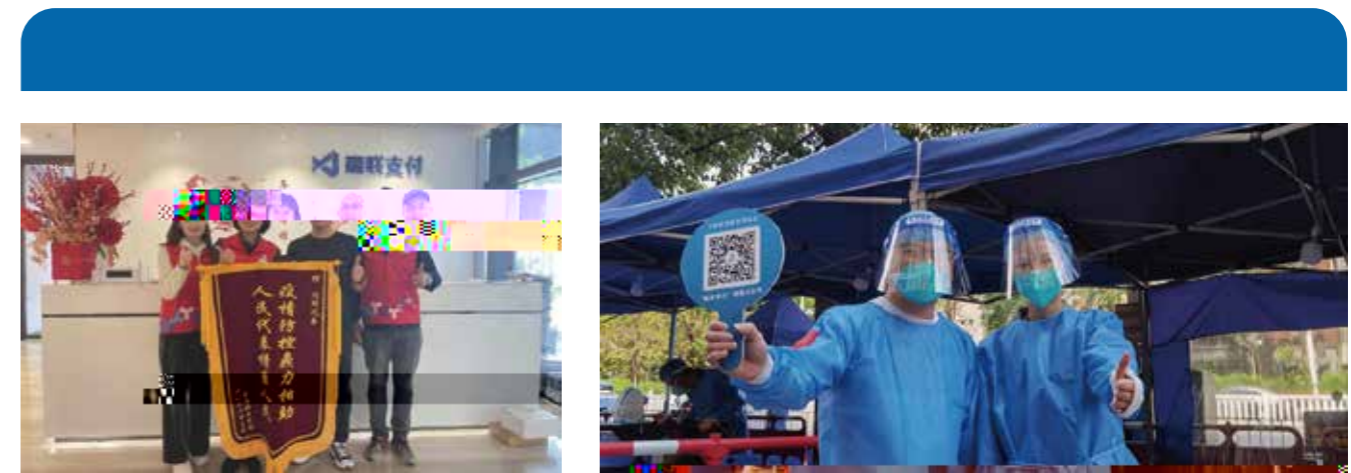
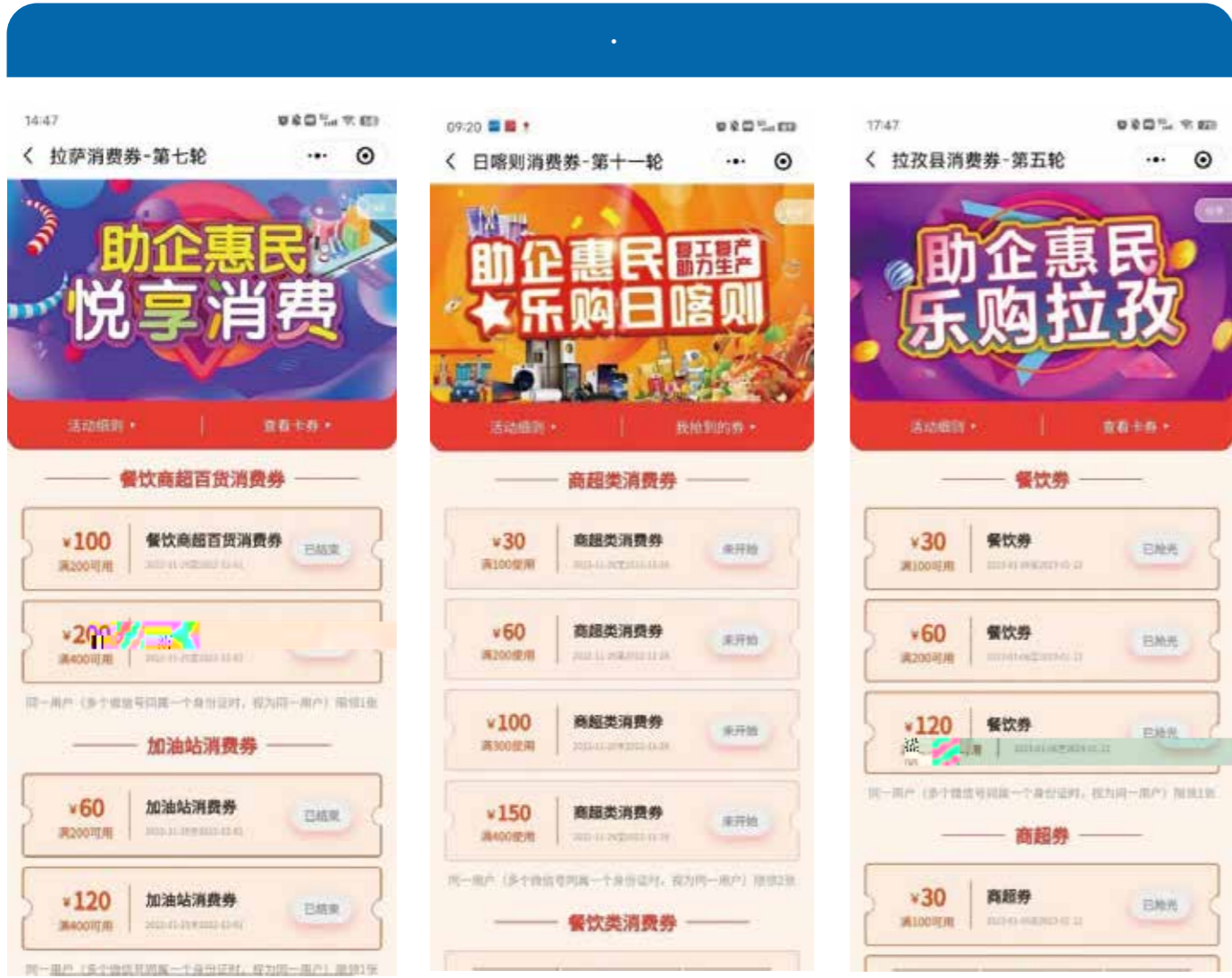
107

160

1.43

7







2022 2



2022 7 1

101

“ ”  
45 12700ml  
“ ”



2022 2

70



appendix

	CASS-CSR4.0	GRI GRI Standards
	P2.1-P2.2	
	P1.1-P1.3	GRI-102
	P4.1-P4.2/A2/A3	GRI-102
	P3.1	
	/	GRI-102
	/	GRI-102
	/	
	M1.1-M1.2/M1.4-M1.5	GRI-101 GRI-102
	M1.3	GRI-205
	/	GRI-101 GRI-102
	S3.1-S3.3	GRI-302 GRI-403 GRI-414
	E1.1-E1.3/E2.5/E2.12/E2.14	GRI-301 GRI-302 GRI-303
	M2.2/M2.4/M2.13-M2.15/M2.18	GRI-102 GRI-416 GRI-418
	S2.1-S2.2/S2.6-S2.8/S2.10-S2.12/S2.14-S2.15	GRI-401 GRI-403 GRI-404 GRI-405
	S4.8	GRI-203
	S4.8	GRI-413

	2022	ESG
	0755-83481391	
	xgd-zqb@xgd.com	
	10 B 20	
1.		/
2.	ESG	
3.	ESG	
4.		
5.	ESG	ESG